

# FASTENER CATALOG

TANGERANG, INDONESIA

CUSTOM PARTS

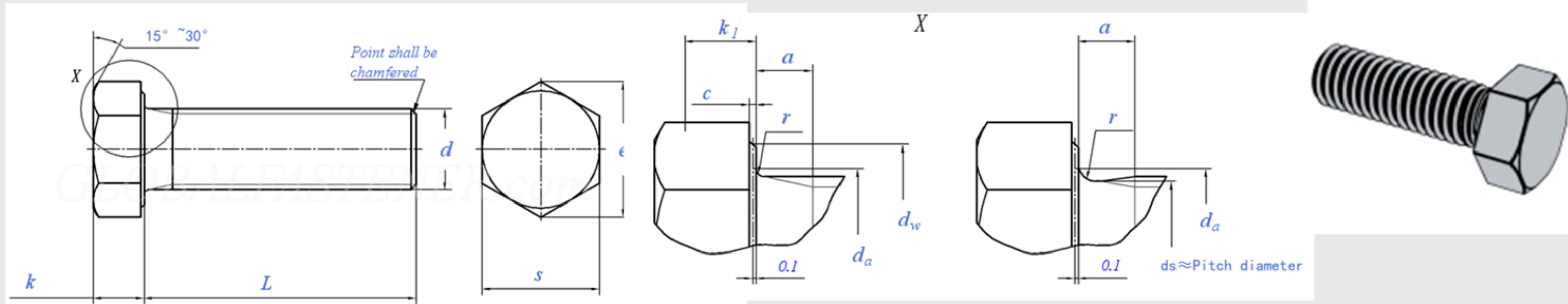
B2B SUPPLIER



ptskbu.id



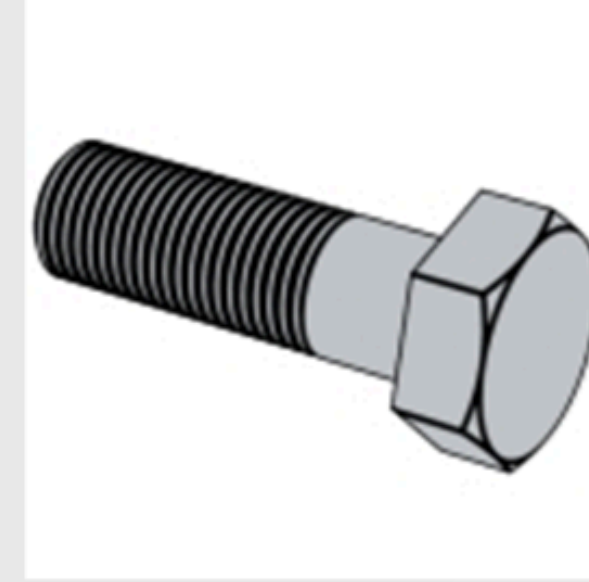
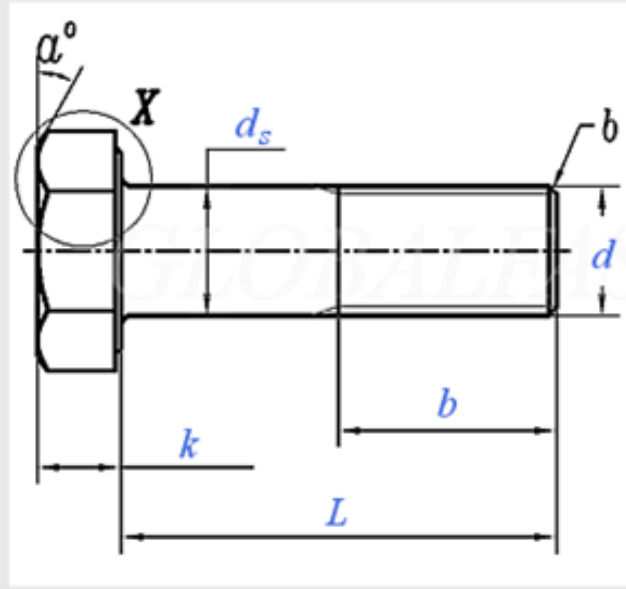
## JIS B 1180 (ISO4017) - 2014 Hexagon Head Screw Bolt, Coarse, Product Grades A



Screw Thread		M8	M10	M12	(M14)	M16	(M18)	M20	(M22)	M24	(M27)	M30	(M33)	M36	(M39)	M42
<b>d</b>																
<b>P</b>	Pitch	1.25	1.5	1.75	2	2	2.5	2.5	2.5	3	3	3.5	3.5	4	4	4.5
<b>a</b>	max	4	4.5	5.3	6	6	7.5	7.5	7.5	9	9	10.5	10.5	12	12	13.5
	min	1.25	1.5	1.75	2	2	2.5	2.5	2.5	3	3	3.5	3.5	4	4	4.5
<b>c</b>	max	0.6	0.6	0.6	0.6	0.8	0.8	0.8	0.8	0.8	0.8	0.8	0.8	0.8	1	1
	min	0.15	0.15	0.15	0.15	0.2	0.2	0.2	0.2	0.2	0.2	0.2	0.2	0.2	0.3	0.3
<b>d<sub>a</sub></b>	max	9.2	11.2	13.7	15.7	17.7	20.2	22.4	24.4	26.4	30.4	33.4	36.4	39.4	42.4	45.6
<b>d<sub>w</sub></b>	min	11.63	14.63	16.63	19.64	22.49	25.34	28.19	31.71	33.61	-	-	-	-	-	-
<b>e</b>	min	14.38	17.77	20.03	23.36	26.75	30.14	33.53	37.72	39.98	-	-	-	-	-	-
<b>k</b>	Nominal Size	5.3	6.4	7.5	8.8	10	11.5	12.5	14	15	17	18.7	21	22.5	25	26
	max	5.45	6.58	7.68	8.98	10.18	11.715	12.715	14.215	15.215	-	-	-	-	-	-
	min	5.15	6.22	7.32	8.62	9.82	11.285	12.285	13.785	14.785	-	-	-	-	-	-
<b>k<sub>1</sub></b>	min	3.61	4.35	5.12	6.03	6.87	7.9	8.6	9.65	10.35	-	-	-	-	-	-
<b>r</b>	min	0.4	0.4	0.6	0.6	0.6	0.6	0.8	0.8	0.8	1	1	1	1	1	1.2
<b>s</b>	max=nominal size	13	16	18	21	24	27	30	34	36	41	46	50	55	60	65
	min	12.73	15.73	17.73	20.67	23.67	26.67	29.67	33.38	35.38	-	-	-	-	-	-



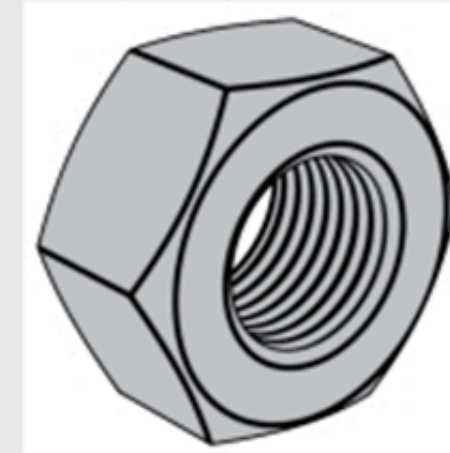
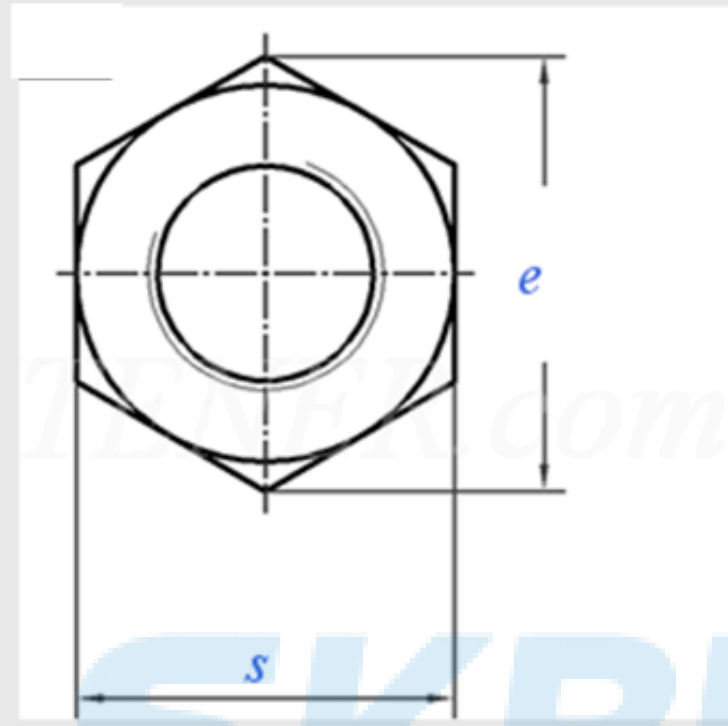
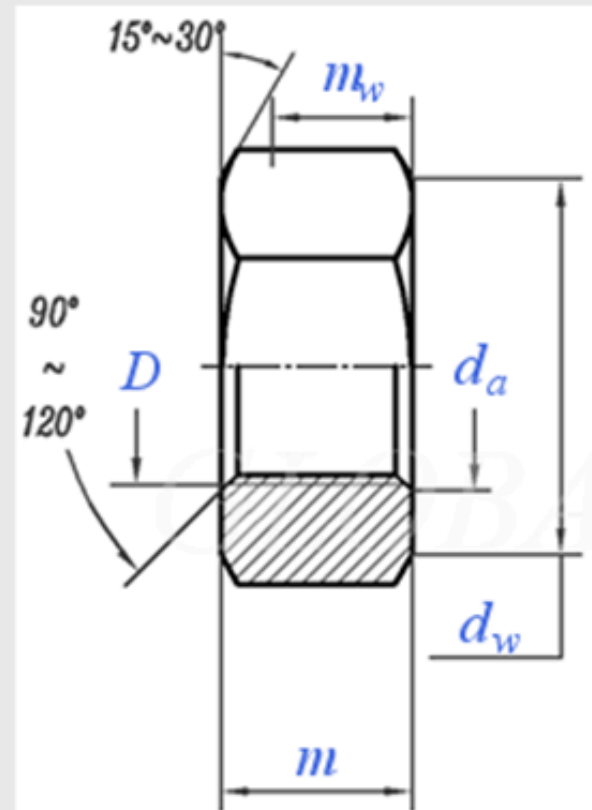
## JIS B 1180 (ISO4014) - 2014 Hexagon Head Bolt - Grades A



Screw Thread		M8	M10	M12	(M14)	M16	(M18)	M20	(M22)	M24	(M27)	M30	(M33)	M36	(M39)	M42
d																
<b>P</b>	Pitch	1.25	1.5	1.75	2	2	2.5	2.5	2.5	3	3	3.5	3.5	4	4	4.5
<b>b</b>	L ≤ 125	22	26	30	34	38	42	46	50	54	60	66	-	-	-	-
	125 < L ≤ 200	28	32	36	40	44	48	52	56	60	66	72	78	84	90	96
	L > 200	41	45	49	53	57	61	65	69	73	79	85	91	97	103	109
<b>c</b>	max	0.6	0.6	0.6	0.6	0.8	0.8	0.8	0.8	0.8	0.8	0.8	0.8	0.8	1	1
	min	0.15	0.15	0.15	0.15	0.2	0.2	0.2	0.2	0.2	0.2	0.2	0.2	0.2	0.3	0.3
<b>da</b>	max	9.2	11.2	13.7	15.7	17.7	20.2	22.4	24.4	26.4	30.4	33.4	36.4	39.4	42.4	45.6
<b>ds</b>	max=nominal size	8	10	12	14	16	18	20	22	24	27	30	33	36	39	42
	min	7.78	9.78	11.73	13.73	15.73	17.73	19.67	21.67	23.67	-	-	-	-	-	-
<b>dw</b>	min	11.63	14.63	16.63	19.64	22.49	25.34	28.19	31.71	33.61	-	-	-	-	-	-
<b>e</b>	min	14.38	17.77	20.03	23.36	26.75	30.14	33.53	37.72	39.98	-	-	-	-	-	-
<b>L1</b>	max	2	2	3	3	3	3	4	4	4	6	6	6	6	6	8
	Nominal Size	5.3	6.4	7.5	8.8	10	11.5	12.5	14	15	17	18.7	21	22.5	25	26
<b>k</b>	max	5.45	6.58	7.68	8.98	10.18	11.715	12.715	14.215	15.215	-	-	-	-	-	-
	min	5.15	6.22	7.32	8.62	9.82	11.285	12.285	13.785	14.785	-	-	-	-	-	-
<b>k1</b>	min	3.61	4.35	5.12	6.03	6.87	7.9	8.6	9.65	10.35	-	-	-	-	-	-
<b>r</b>	min	0.4	0.4	0.6	0.6	0.6	0.6	0.8	0.8	0.8	1	1	1	1	1	1.2
<b>s</b>	max=nominal size	13	16	18	21	24	27	30	34	36	41	46	50	55	60	65
	min	12.73	15.73	17.73	20.67	23.67	26.67	29.67	33.38	35.38	-	-	-	-	-	-



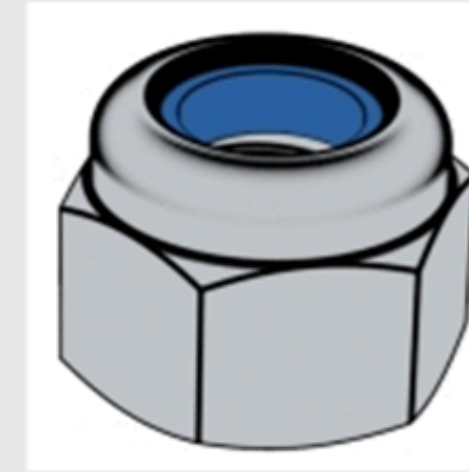
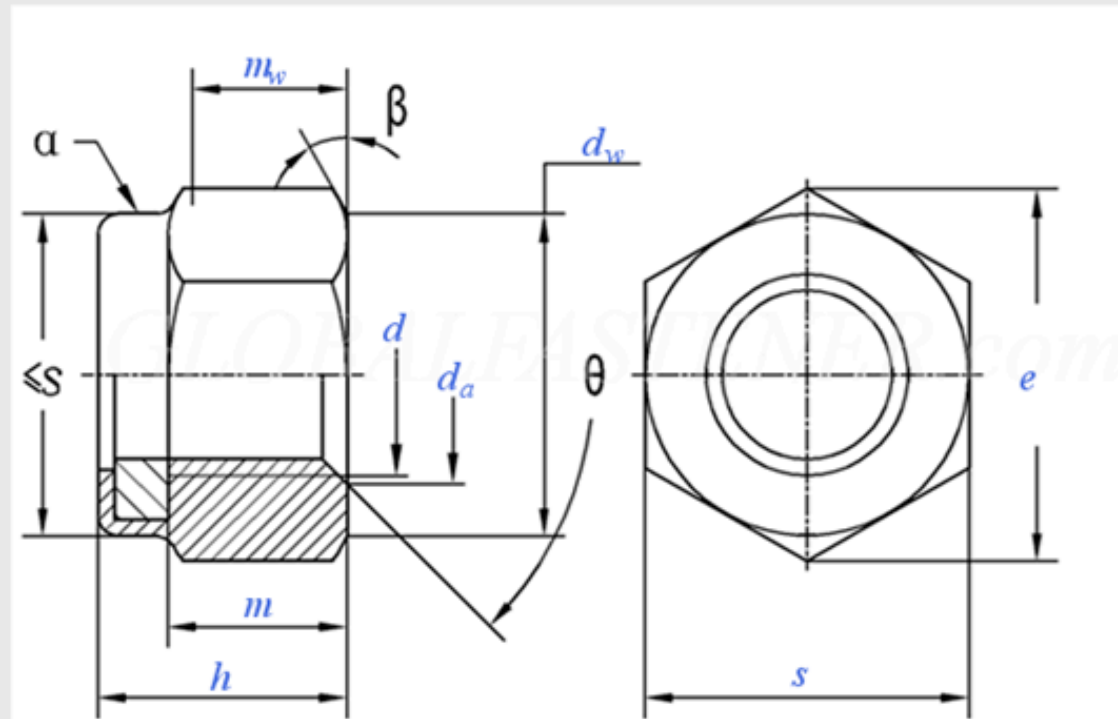
## JIS B 1181 - 2014 Hexagon Nut



Thread Size		M5	M6	M8	M10	M12	(M14)	M16	M20	M24	M30	M36
<b>D</b>												
<b>P</b>	Pitch	0.8	1	1.25	1.5	1.75	2	2	2.5	3	3.5	4
<b>c</b>	max	0.5	0.5	0.6	0.6	0.6	0.6	0.8	0.8	0.8	0.8	0.8
<b>d<sub>a</sub></b>	max	5.75	6.75	8.75	10.8	13	15.1	17.3	21.6	25.9	32.4	38.9
	min	5	6	8	10	12	14	16	20	24	30	36
<b>d<sub>w</sub></b>	min	6.9	8.9	11.6	14.6	16.6	19.6	22.5	27.7	33.2	42.7	51.1
<b>e</b>	min	8.79	11.05	14.38	17.77	20.03	23.36	26.75	32.95	39.55	50.85	60.79
<b>m</b>	max	5.1	5.7	7.5	9.3	12	14.1	16.4	20.3	23.9	28.6	34.7
	min	4.8	5.4	7.14	8.94	11.57	13.4	15.7	19	22.6	27.3	33.1
<b>m<sub>w</sub></b>	min	3.84	4.32	5.71	7.15	9.26	10.7	12.6	15.2	18.1	21.8	26.5
<b>s</b>	max	8	10	13	16	18	21	24	30	36	46	55
	min	7.78	9.78	12.73	15.73	17.73	20.67	23.67	29.16	35	45	53.8



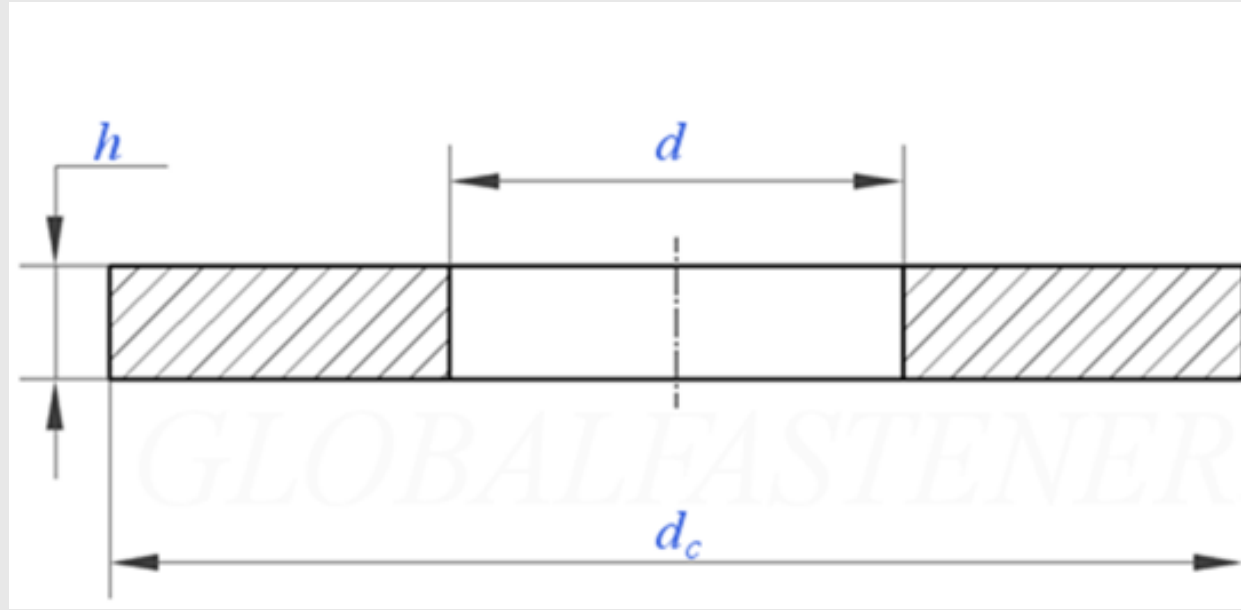
JIS B 1199-1 (ISO 7041) - 2001 Prevailing torque type nut - hexagon nuts with non-metallic insert,



$\alpha$ : Prevailing torque element, shape optional  
 $\beta=15^\circ \sim 30^\circ$   
 $\theta=90^\circ \sim 120^\circ$

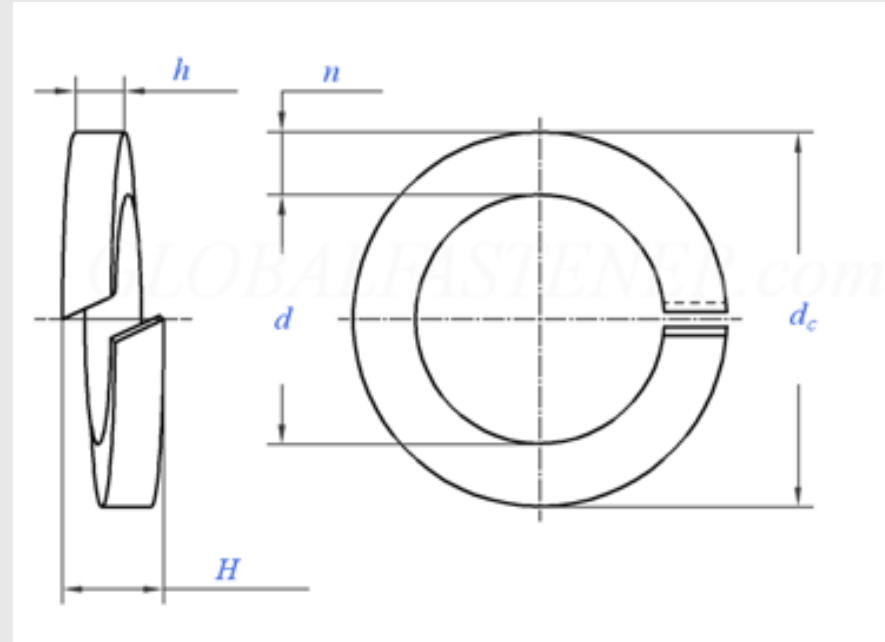
Screw Thread		M5	M6	M8	M10	M12	(M14)	M16	M20	M24	M30	M36
<b>d</b>												
<b>P</b>	Pitch	0.8	1	1.25	1.5	1.75	2	2	2.5	3	3.5	4
<b>d<sub>a</sub></b>	max	5.75	6.75	8.75	10.8	13	15.1	17.3	21.6	25.9	32.4	38.9
	min	5	6	8	10	12	14	16	20	24	30	36
<b>d<sub>w</sub></b>	min	6.88	8.88	11.63	14.63	16.63	19.64	22.49	27.7	33.25	42.75	51.11
<b>e</b>	min	8.79	11.05	14.38	17.77	20.03	23.36	26.75	32.95	39.55	50.85	60.79
<b>h</b>	max	7.2	8.5	10.2	12.8	16.1	18.3	20.7	25.1	29.5	35.6	42.6
	min	6.62	7.92	9.5	12.1	15.4	17	19.4	23	27.4	33.1	40.1
<b>m</b>	min	4.8	5.4	7.14	8.94	11.57	13.4	15.7	19	22.6	27.3	33.1
<b>m<sub>w</sub></b>	min	3.52	3.92	5.15	6.43	8.3	9.68	11.28	13.52	16.16	19.44	23.52
<b>s</b>	max	8	10	13	16	18	21	24	30	36	46	55
	min	<b>7.78</b>	<b>9.78</b>	<b>12.73</b>	<b>15.73</b>	<b>17.73</b>	<b>20.67</b>	<b>23.67</b>	<b>29.16</b>	<b>35</b>	<b>45</b>	<b>53.8</b>





Nominal Diameter		<u>Ø6</u>	<u>Ø8</u>	<u>Ø10</u>	<u>Ø12</u>	<u>(Ø14)</u>	<u>Ø16</u>	<u>(Ø18)</u>	<u>Ø20</u>	<u>(Ø22)</u>	<u>Ø24</u>	<u>(Ø27)</u>
<b>d</b>	min=nominal size	6.4	8.4	10.5	13	15	17	19	21	23	25	28
	max	6.65	8.65	10.8	13.3	15.3	17.3	19.35	21.35	23.35	25.35	28.35
<b>d<sub>c</sub></b>	max=nominal size	<b>12.5</b>	<b>17</b>	21	24	28	30	34	37	39	44	50
	min	12.1	16.6	20.5	23.5	27.5	29.5	33.4	36.4	38.4	43.4	49.4
<b>h</b>	Nominal Size	1.6	1.6	2	2.5	2.5	3	3	3	3	4	4
	max	1.75	1.75	2.2	2.75	2.75	3.3	3.3	3.3	3.3	4.4	4.4
	min	1.45	1.45	1.8	2.25	2.25	2.7	2.7	2.7	2.7	3.6	3.6
Nominal Diameter		<u>Ø30</u>	<u>(Ø33)</u>	<u>Ø36</u>	<u>(Ø39)</u>	<u>Ø42</u>	<u>(Ø45)</u>	<u>Ø48</u>	<u>(Ø52)</u>	<u>Ø56</u>	<u>(Ø60)</u>	<u>Ø64</u>
<b>d</b>	min=nominal size	31	34	37	40	43	46	50	54	58	62	66
	max	31.4	34.4	37.4	40.4	43.4	46.4	50.4	54.5	58.5	62.5	66.5
<b>d<sub>c</sub></b>	max=nominal size	56	60	66	72	78	85	92	98	105	110	115
	min	55.2	59.2	65.2	71.2	77.2	84	91	97	104	109	114
<b>h</b>	Nominal Size	4	5	5	6	7	7	8	8	9	9	9
	max	4.4	5.5	5.5	6.6	7.7	7.7	8.7	8.7	9.7	9.7	9.7
	min	3.6	4.5	4.5	5.4	6.3	6.3	7.3	7.3	8.3	8.3	8.3





Size		<u>Ø6</u>	<u>(Ø7)</u>	<u>Ø8</u>	<u>Ø10</u>	<u>Ø12</u>	<u>(Ø14)</u>	<u>Ø16</u>	<u>(Ø18)</u>
<b>d</b>	max	6.5	<b>7.5</b>	8.7	10.7	12.8	14.8	17	19
	min	6.1	<b>7.1</b>	8.2	10.2	12.2	14.2	16.2	18.2
<b>n</b>	min	2.7	<b>2.8</b>	3.2	3.7	4.2	4.7	5.2	5.7
<b>h</b>	min	<b>1.5</b>	<b>1.6</b>	<b>2</b>	<b>2.5</b>	<b>3</b>	3.5	4	4.6
<b>d<sub>c</sub></b>	max	12.2	<b>13.4</b>	15.4	18.4	21.5	24.5	28	31
<b>H</b>	(≈2h)	3	<b>3.2</b>	4	5	6	7	8	9.2
Size		<u>Ø20</u>	<u>(Ø22)</u>	<u>Ø24</u>	<u>(Ø27)</u>	<u>Ø30</u>	<u>(Ø33)</u>	<u>Ø36</u>	<u>(Ø39)</u>
<b>d</b>	max	21	23.5	25.5	28.7	31.7	34.9	37.9	40.9
	min	20.2	22.5	24.5	27.5	30.5	33.5	36.5	39.5
<b>n</b>	min	6.1	6.8	7.1	7.9	8.7	9.5	10.2	10.7
<b>h</b>	min	5.1	5.6	5.9	6.8	7.5	8.2	9	9.5
<b>d<sub>c</sub></b>	max	33.8	37.7	40.3	45.3	49.9	54.7	59.1	63.1
<b>H</b>	(≈2h)	10.2	11.2	11.8	13.6	15	16.4	18	19



**SKBU**  
SUMBER KARYA BAJAUTAMA

**GET IN TOUCH WITH US**



[marketing@ptskbu.id](mailto:marketing@ptskbu.id)



[information@ptskbu.id](mailto:information@ptskbu.id)



[ptskbu.id](https://ptskbu.id)

